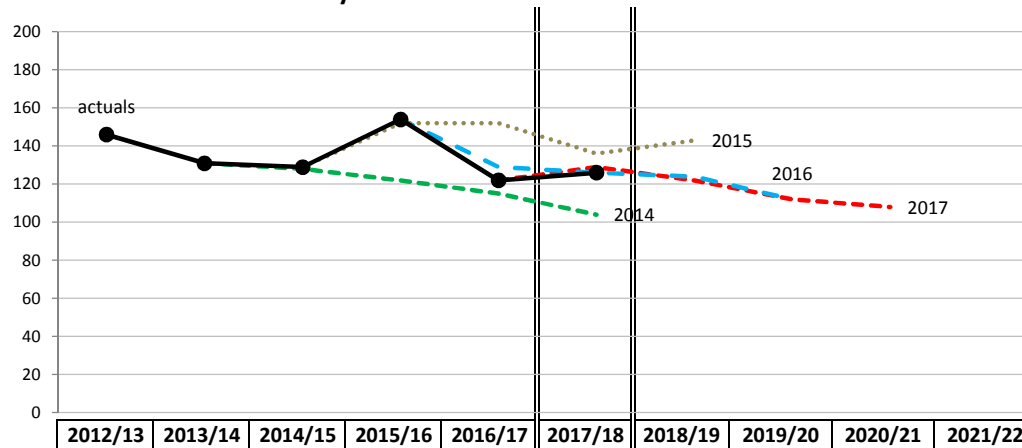


APPENDIX B: Assessment of pupil projection accuracy

Pupil Projection Accuracy for Year R intake in Ascot Primary Schools

Pupil projections are carried out annually, and those from the last four years are shown here. For primary schools these look four years ahead.



Note: at the date of writing we are awaiting the school census figures for October, which may change the Actual Yr R figure in yellow.

Actual Year R	2012/13	2013/14	2014/15	2015/16	2016/17	2017/18	2018/19	2019/20	2020/21	2021/22
Actual Year R	146	131	129	154	122	126				
2014 Projected Yr 5			128	122	115	104				
Difference to actual			-1	-32	-7	-22				
%			-0.8%	-26.2%	-6.1%	-21.2%				
2015 Projected Yr 5				152	152	136	143			
Difference to actual				-2	+30	+10				
%				-1.3%	19.7%	7.4%				
2016 Projected Yr 5					129	126	124	112		
Difference to actual					+7	0				
%					5.4%	0.0%				
2017 Projected Yr 5						129	122	112	108	
Difference to actual						+3				
%						2.3%				

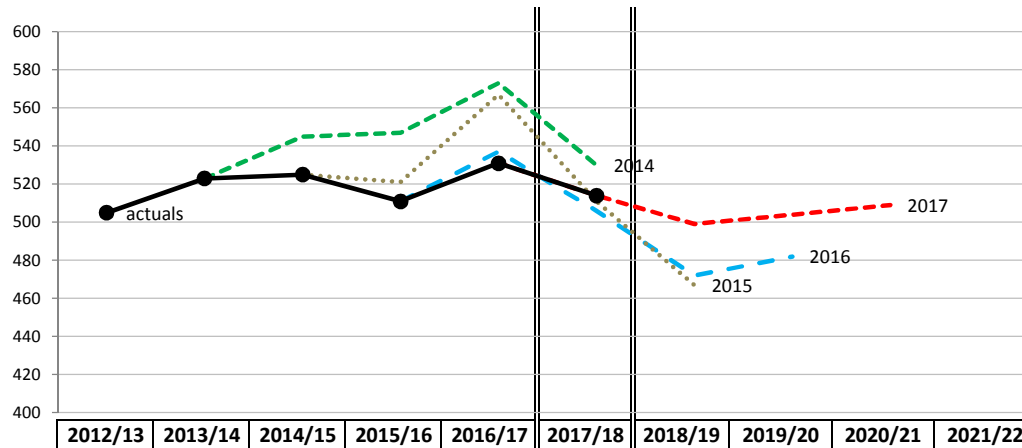
Notes
Concerns about the accuracy of the base data for Ascot (GP patient registrations data) came to a head with the 2014 projections, which failed to predict the September 2015 bulge in demand.
A much improved projection model was developed for 2015, and forms the basis of all subsequent projections. Following the difficulties with the 2014 projections for Ascot, the 2015 calculations for the town were also based on the births data, rather than the GP registrations data. These have, however, over-estimated future demand.
The 2017 model includes a factor for the migration of children in and out of the area before they reach school age. This should improve accuracy for the later years of the projections, but will need to be monitored against actual future demand.

Accuracy key	+/- <1% or +/- <5	+/- <2% or +/- <7	+/- <3% or +/- <9	+/- <4% or +/- <11	+/- <5% or +/- <13	+/- = or >5%
--------------	-------------------	-------------------	-------------------	--------------------	--------------------	--------------

APPENDIX B: Assessment of pupil projection accuracy

Pupil Projection Accuracy for Year R intake in Windsor First Schools

Pupil projections are carried out annually, and those from the last four years are shown here. For primary schools these look four years ahead.



Note: at the date of writing we are awaiting the school census figures for October, which may change the Actual Yr R figure in yellow.

Actual Year R	2012/13	2013/14	2014/15	2015/16	2016/17	2017/18	2018/19	2019/20	2020/21	2021/22
Actual Year R	505	523	525	511	531	514				
2014 Projected Yr 5			545	547	573	530				
Difference to actual			+20	+36	+42	+16				
%			3.7%	6.6%	7.3%	3.0%				
2015 Projected Yr 5				521	567	511	467			
Difference to actual				+10	+36	-3				
%				1.9%	6.3%	-0.6%				
2016 Projected Yr 5					537	506	472	482		
Difference to actual					+6	-8				
%					1.1%	-1.6%				
2017 Projected Yr 5						514	499	504	509	
Difference to actual						0				
%						0.0%				

Notes

The 2014 projections significantly over-projected future demand for Windsor.

A much improved projection model was developed for 2015, and forms the basis of all subsequent projections. The 2015 projections indicated a bulge in demand for September 2016 (based on a significant bulge in the GP registrations data). This was not evident in the births data and, in the end, did not materialise.

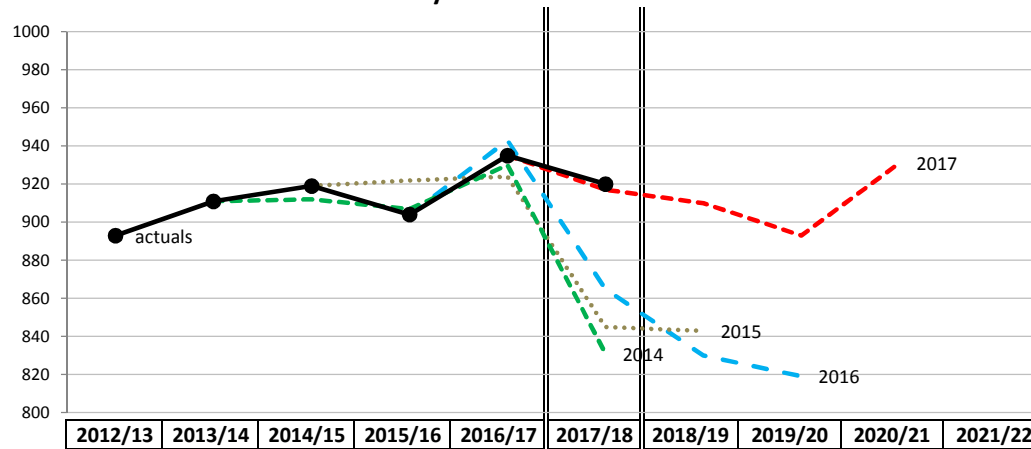
The 2017 model includes a factor for the migration of children in and out of the area before they reach school age. This should improve accuracy for the later years of the projections, but will need to be monitored against actual future demand. The 2017 projections are higher than the 2015 and 2016 projections for the period to 2020.

Accuracy key	+/- <1% or +/- <5	+/- <2% or +/- <7	+/- <3% or +/- <9	+/- <4% or +/- <11	+/- <5% or +/- <13	+/- = or >5%
--------------	-------------------	-------------------	-------------------	--------------------	--------------------	--------------

APPENDIX B: Assessment of pupil projection accuracy

Pupil Projection Accuracy for Year R intake in Maidenhead Primary Schools

Pupil projections are carried out annually, and those from the last four years are shown here. For primary schools these look four years ahead.



Note: at the date of writing we are awaiting the school census figures for October, which may change the Actual Yr R figure in yellow.

Actual Year R	2012/13	2013/14	2014/15	2015/16	2016/17	2017/18	2018/19	2019/20	2020/21	2021/22
Actual Year R	893	911	919	904	935	920				
2014 Projected Yr 5			912	907	930	831				
Difference to actual			-7	+3	-5	-89				
%			-0.8%	0.3%	-0.5%	-10.7%				
2015 Projected Yr 5				922	924	845	843			
Difference to actual				+18	-11	-75				
%				2.0%	-1.2%	-8.9%				
2016 Projected Yr 5					943	865	830	819		
Difference to actual					+8	-55				
%					0.8%	-6.4%				
2017 Projected Yr 5						917	910	893	931	
Difference to actual						-3				
%						-0.3%				

Notes

The projections for Maidenhead have, generally, proven very accurate, with the exception of estimates for the very latest, September 2017, intake. This is likely to be related to changing patterns of migration into the borough and the impact of new housing.

A much improved projection model was developed for 2015, and forms the basis of all subsequent projections.

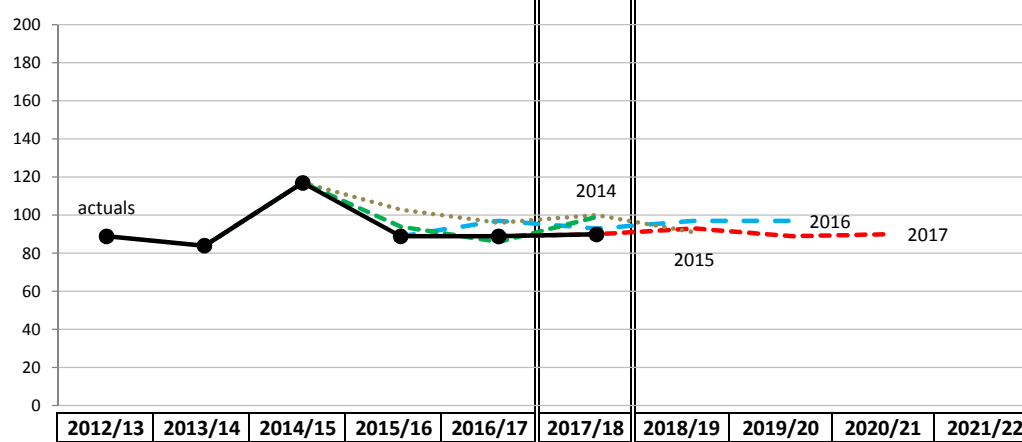
The 2017 model includes a factor for the migration of children in and out of the area before they reach school age. This should improve accuracy for the later years of the projections, but will need to be monitored against actual future demand. The 2017 projections are significantly higher than the 2015 and 2016 projections for the period to 2020.

Accuracy key	+/- <1% or +/- <5	+/- <2% or +/- <7	+/- <3% or +/- <9	+/- <4% or +/- <11	+/- <5% or +/- <13	+/- = or >5%
--------------	-------------------	-------------------	-------------------	--------------------	--------------------	--------------

APPENDIX B: Assessment of pupil projection accuracy

Pupil Projection Accuracy for Year R intake in Datchet/Wraysbury Primary Schools

Pupil projections are carried out annually, and those from the last four years are shown here. For primary schools these look four years ahead.



Note: at the date of writing we are awaiting the school census figures for October, which may change the Actual Yr R figure in yellow.

Actual Year R	2012/13	2013/14	2014/15	2015/16	2016/17	2017/18	2018/19	2019/20	2020/21	2021/22
Actual Year R	89	84	117	89	89	90				
2014 Projected Yr 5			117	94	86	99				
Difference to actual			0	+5	-3	+9				
%			0.0%	5.3%	-3.5%	9.1%				
2015 Projected Yr 5				103	96	100	91			
Difference to actual				+14	+7	+10				
%				13.6%	7.3%	10.0%				
2016 Projected Yr 5					97	93	97	97		
Difference to actual					+8	+3				
%					8.2%	3.2%				
2017 Projected Yr 5						90	93	89	90	
Difference to actual						0				
%						0.0%				

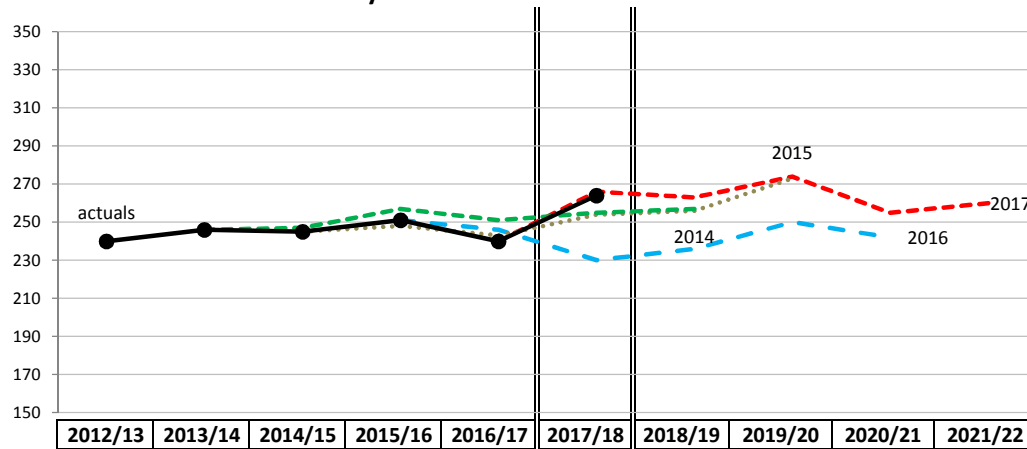
Notes
The projections for Datchet & Wraysbury have, generally, proven accurate.
A much improved projection model was developed for 2015, and forms the basis of all subsequent projections.
The 2017 model includes a factor for the migration of children in and out of the area before they reach school age. This should improve accuracy for the later years of the projections, but will need to be monitored against actual future demand.

Accuracy key	+/- <1% or +/- <5	+/- <2% or +/- <7	+/- <3% or +/- <9	+/- <4% or +/- <11	+/- <5% or +/- <13	+/- = or >5%

APPENDIX B: Assessment of pupil projection accuracy

Pupil Projection Accuracy for Year 7 intake in Ascot Secondary Schools

Pupil projections are carried out annually, and those from the last four years are shown here. For secondary schools these look five years ahead.



Note: at the date of writing we are awaiting the school census figures for October, which may change the Actual Yr 7 figure in yellow.

Actual Year 7	2012/13	2013/14	2014/15	2015/16	2016/17	2017/18	2018/19	2019/20	2020/21	2021/22
Actual Year 7	240	246	245	251	240	264				
2014 Projected Yr 5			247	257	251	255	257			
Difference to actual			+2	+6	+11	-9				
%			0.8%	2.3%	4.4%	-3.5%				
2015 Projected Yr 5				248	243	254	256	273		
Difference to actual				-3	+3	-10				
%				-1.2%	1.2%	-3.9%				
2016 Projected Yr 5					246	230	236	250	242	
Difference to actual					+6	-34				
%					2.4%	-14.8%				
2017 Projected Yr 5						266	263	274	255	260
Difference to actual						+2				
%						0.8%				

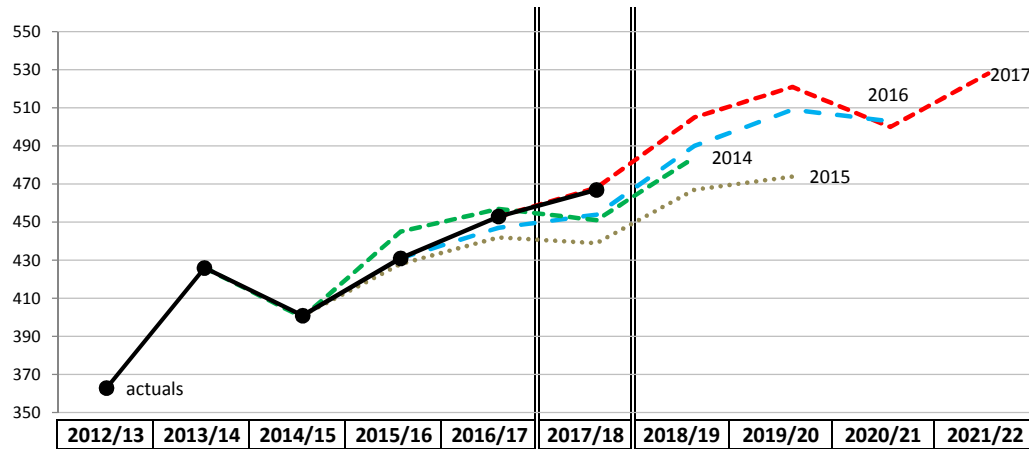
Notes
A much improved projection model was developed for 2015, and forms the basis of all subsequent projections.
Charters School expanded by 30 places in September 2017, ahead of an increase in demand from local children. The likelihood that the spare places would be filled by out-borough children was, through an oversight, not properly taken into account.

Accuracy key	+/- <1% or +/- <5	+/- <2% or +/- <7	+/- <3% or +/- <9	+/- <4% or +/- <11	+/- <5% or +/- <13	+/- = or >5%

APPENDIX B: Assessment of pupil projection accuracy

Pupil Projection Accuracy for Year 5 intake in Windsor Middle Schools

Pupil projections are carried out annually, and those from the last four years are shown here. For secondary schools these look five years ahead.



Note: at the date of writing we are awaiting the school census figures for October, which may change the Actual Yr 5 figure in yellow.

Actual Year 5	2012/13	2013/14	2014/15	2015/16	2016/17	2017/18	2018/19	2019/20	2020/21	2021/22
Actual Year 5	363	426	401	431	453	467				
2014 Projected Yr 5			400	445	457	451	484			
Difference to actual			-1	+14	+4	-16				
%			-0.3%	3.1%	0.9%	-3.5%				
2015 Projected Yr 5				428	442	439	467	474		
Difference to actual				-3	-11	-28				
%				-0.7%	-2.5%	-6.4%				
2016 Projected Yr 5					447	454	490	509	503	
Difference to actual					-6	-13				
%					-1.3%	-2.9%				
2017 Projected Yr 5						468	505	521	500	528
Difference to actual						+1				
%						0.2%				

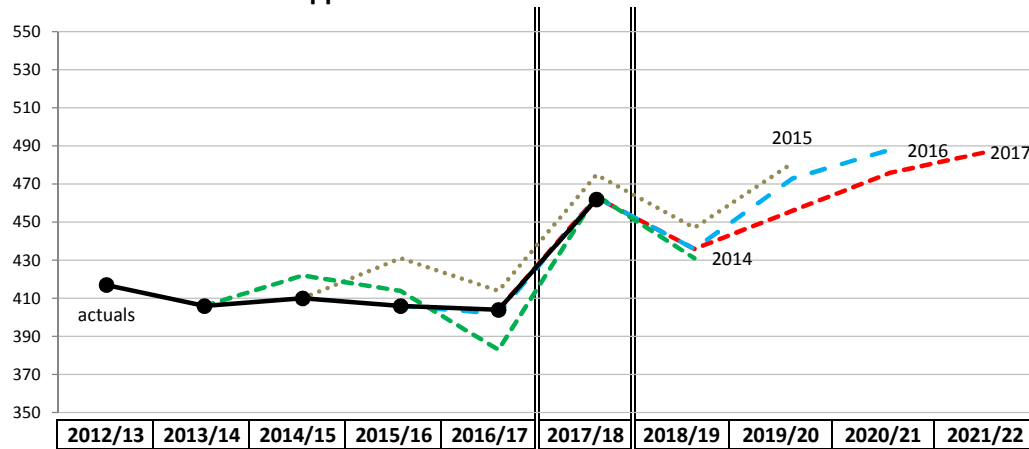
Notes
A much improved projection model was developed for 2015, and forms the basis of all subsequent projections. Increasing popularity at one of the middle schools that was previously less popular has led to some consistent, though largely minor, underprojection of demand in recent years.

Accuracy key	+/- <1% or +/- <5	+/- <2% or +/- <7	+/- <3% or +/- <9	+/- <4% or +/- <11	+/- <5% or +/- <13	+/- = or >5%

APPENDIX B: Assessment of pupil projection accuracy

Pupil Projection Accuracy for Year 9 intake in Windsor Upper Schools

Pupil projections are carried out annually, and those from the last four years are shown here. For secondary schools these look five years ahead.



Note: at the date of writing we are awaiting the school census figures for October, which may change the Actual Yr 9 figure in yellow.

Actual Year 9	2012/13	2013/14	2014/15	2015/16	2016/17	2017/18	2018/19	2019/20	2020/21	2021/22
Actual Year 9	417	406	410	406	404	462				
2014 Projected Yr 5			422	414	383	464	431			
Difference to actual			+12	+8	-21	+2				
%			2.8%	1.9%	-5.5%	0.4%				
2015 Projected Yr 5				431	414	475	447	481		
Difference to actual				+25	+10	+13				
%				5.8%	2.4%	2.7%				
2016 Projected Yr 5					402	463	436	473	488	
Difference to actual					-2	+1				
%					-0.5%	0.2%				
2017 Projected Yr 5						463	436	456	476	487
Difference to actual						+1				
%						0.2%				

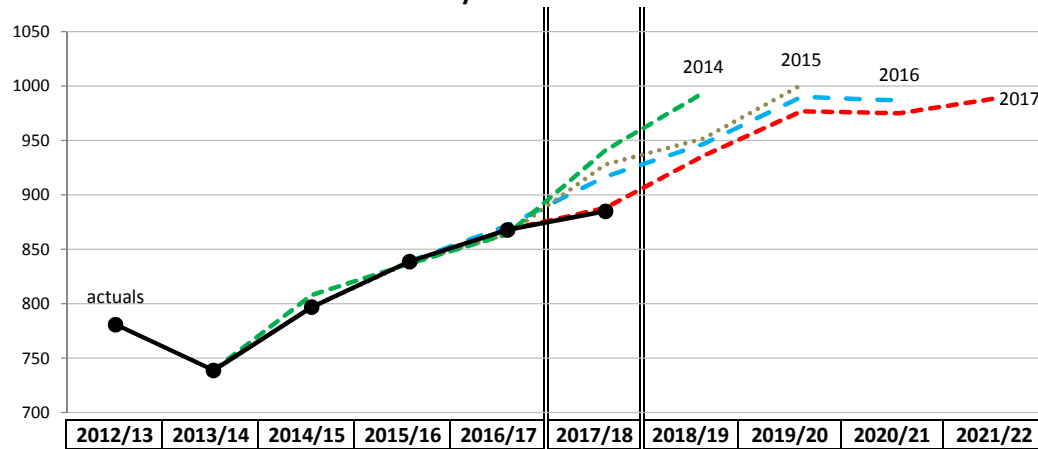
Notes
Projections for Windsor upper school places have been complicated by the opening of a new school, which initially took significant numbers of out-borough children and has a mixture of day and boarding places.
A much improved projection model was developed for 2015, and forms the basis of all subsequent projections. This still slightly overprojected in 2015, largely due to over-estimating the number of out-borough children taking up Year 9 places.

Accuracy key	+/- <1% or +/- <5	+/- <2% or +/- <7	+/- <3% or +/- <9	+/- <4% or +/- <11	+/- <5% or +/- <13	+/- = or >5%

APPENDIX B: Assessment of pupil projection accuracy

Pupil Projection Accuracy for Year 7 intake in Maidenhead Secondary Schools

Pupil projections are carried out annually, and those from the last four years are shown here. For secondary schools these look five years ahead.



Note: at the date of writing we are awaiting the school census figures for October, which may change the Actual Yr 7 figure in yellow.

Actual Year 7	2012/13	2013/14	2014/15	2015/16	2016/17	2017/18	2018/19	2019/20	2020/21	2021/22
Actual Year 7	781	739	797	839	868	885				
2014 Projected Yr 5			808	837	864	941	994			
Difference to actual			+11	-2	-4	+56				
%			1.4%	-0.2%	-0.5%	6.0%				
2015 Projected Yr 5				838	864	928	952	1001		
Difference to actual				-1	-4	+43				
%				-0.1%	-0.5%	4.6%				
2016 Projected Yr 5					872	917	947	990	987	
Difference to actual					+4	+32				
%					0.5%	3.5%				
2017 Projected Yr 5						888	936	977	975	989
Difference to actual						+3				
%						0.3%				

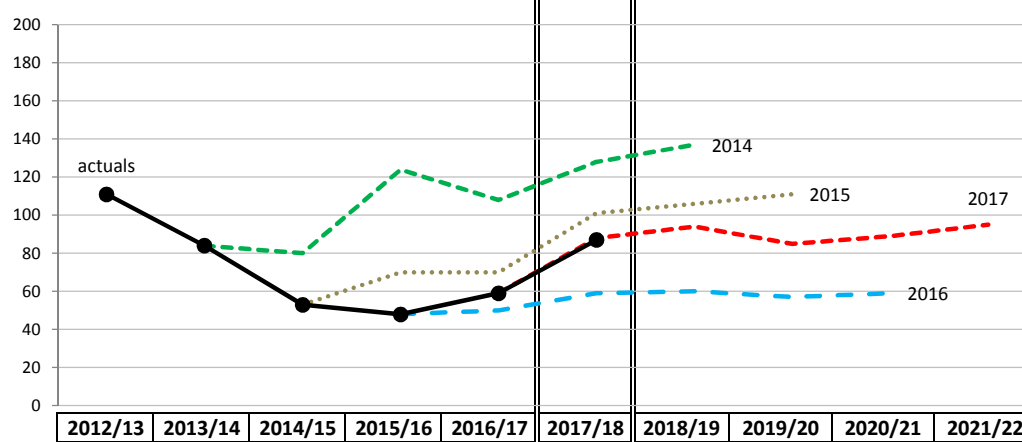
Notes
A much improved projection model was developed for 2015, and forms the basis of all subsequent projections.
The Maidenhead secondary projections have generally been accurate, with the exception of the estimates for September 2017. Analysis shows that significantly more Maidenhead children in this cohort (140) have taken up grammar school places than normal (the previous high was 116, compared to the longer-term average of 90).
The 2017 projections include a higher proportion of children transferring to grammar schools in neighbouring authorities than previously. Demand going forward could be higher, however, if the transfers to grammar return to their longer-term average.

Accuracy key	+/- <1% or +/- <5	+/- <2% or +/- <7	+/- <3% or +/- <9	+/- <4% or +/- <11	+/- <5% or +/- <13	+/- = or >5%

APPENDIX B: Assessment of pupil projection accuracy

Pupil Projection Accuracy for Year 7 intake in Datchet/Wraysbury Secondary Schools

Pupil projections are carried out annually, and those from the last four years are shown here. For secondary schools these look five years ahead.



Note: at the date of writing we are awaiting the school census figures for October, which may change the Actual Yr 7 figure in yellow.

Actual Year 7	2012/13	2013/14	2014/15	2015/16	2016/17	2017/18	2018/19	2019/20	2020/21	2021/22
Actual Year 7	111	84	53	48	59	87				
2014 Projected Yr 5			80	124	108	128	137			
Difference to actual			+27	+76	+49	+41				
%			33.8%	61.3%	45.4%	32.0%				
2015 Projected Yr 5				70	70	101	106	111		
Difference to actual				+22	+11	+14				
%				31.4%	15.7%	13.9%				
2016 Projected Yr 5					50	59	60	57	59	
Difference to actual					-9	-28				
%					-18.0%	-47.5%				
2017 Projected Yr 5						88	94	85	89	95
Difference to actual						+1				
%						1.1%				

Notes

The projections for Churchmead have clearly not been accurate. Most of the school's intake comes from Slough, and in recent years a significant amount of new capacity has been provided in four new secondary free schools. These schools have taken many children who might otherwise have gone to Churchmead.

Churchmead's January 2016 'Good' Ofsted has led to an increase in popularity, which is now projected forward. It is possible that the school will see further increases in numbers in future years. If so, then the 2017 projections will prove to be an underestimate of demand.

Accuracy key	+/- <1% or +/- <5	+/- <2% or +/- <7	+/- <3% or +/- <9	+/- <4% or +/- <11	+/- <5% or +/- <13	+/- = or >5%
--------------	-------------------	-------------------	-------------------	--------------------	--------------------	--------------